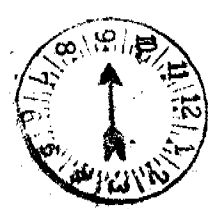
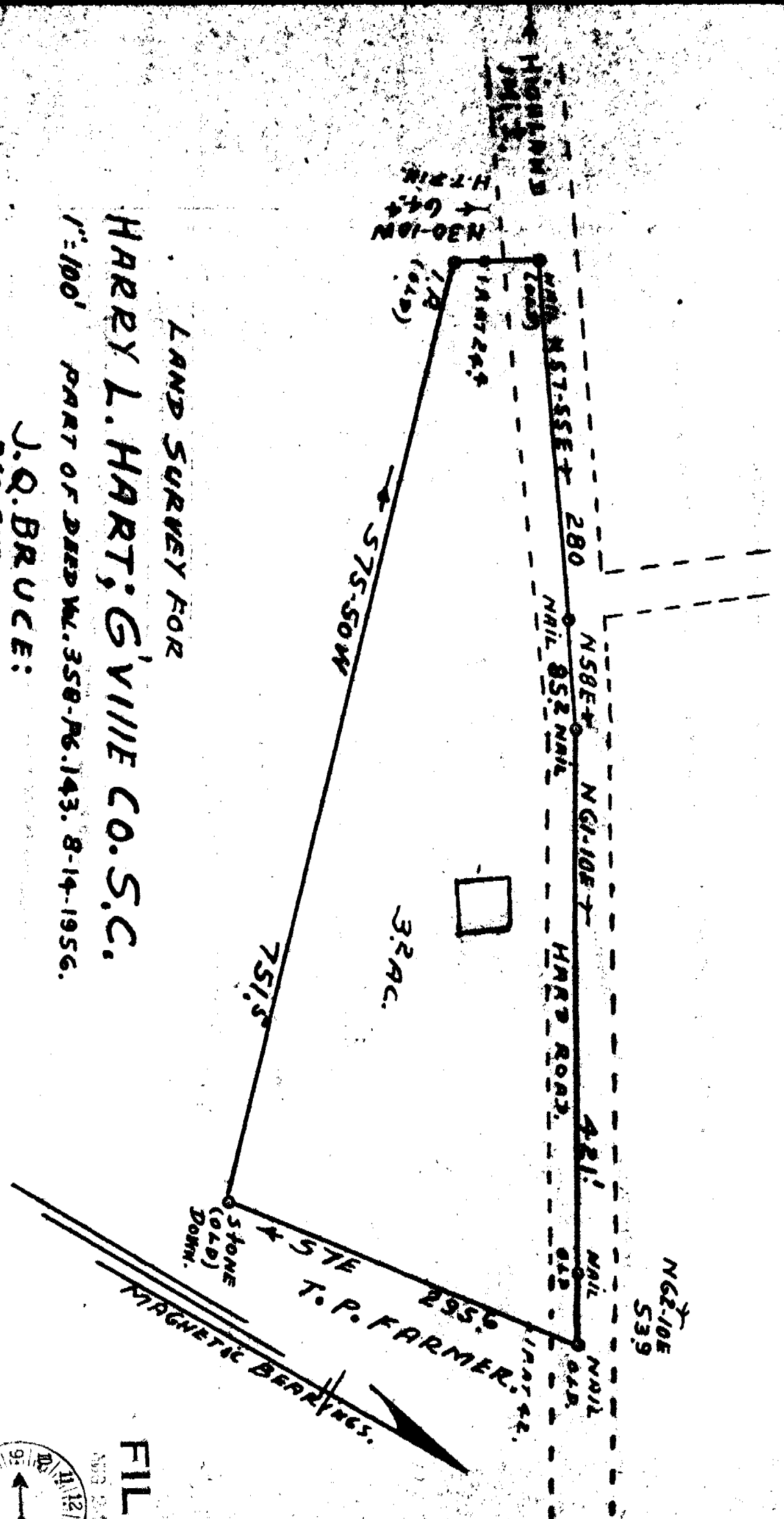


LAND SURVEY FOR  
**HARRY L. HART, G'VILLE CO. S.C.**  
 1"=100' PART OF DEED W. 358-P. 143. 8-14-1956.  
**J. Q. BRUCE:**  
 REG. SURVEYOR.



**FILED**

Miss. Ollie Farnsworth  
 R. M. Co.

Recorded August 24th, 1956 at 9:00 A. M. #21550

21550  
 321 100  
 AUG 24 1956